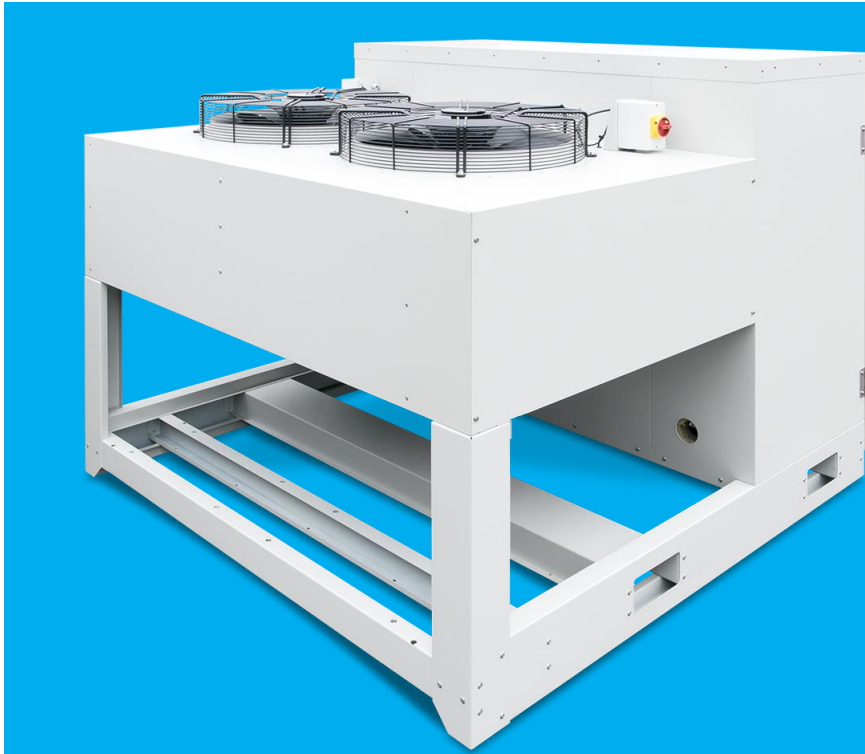


BKB/BKFH Housed Condensers

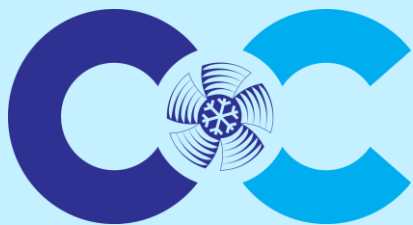
Nominal Capacity 21.5kW to 66.7kW



BKB/BKFH Housed Condenser

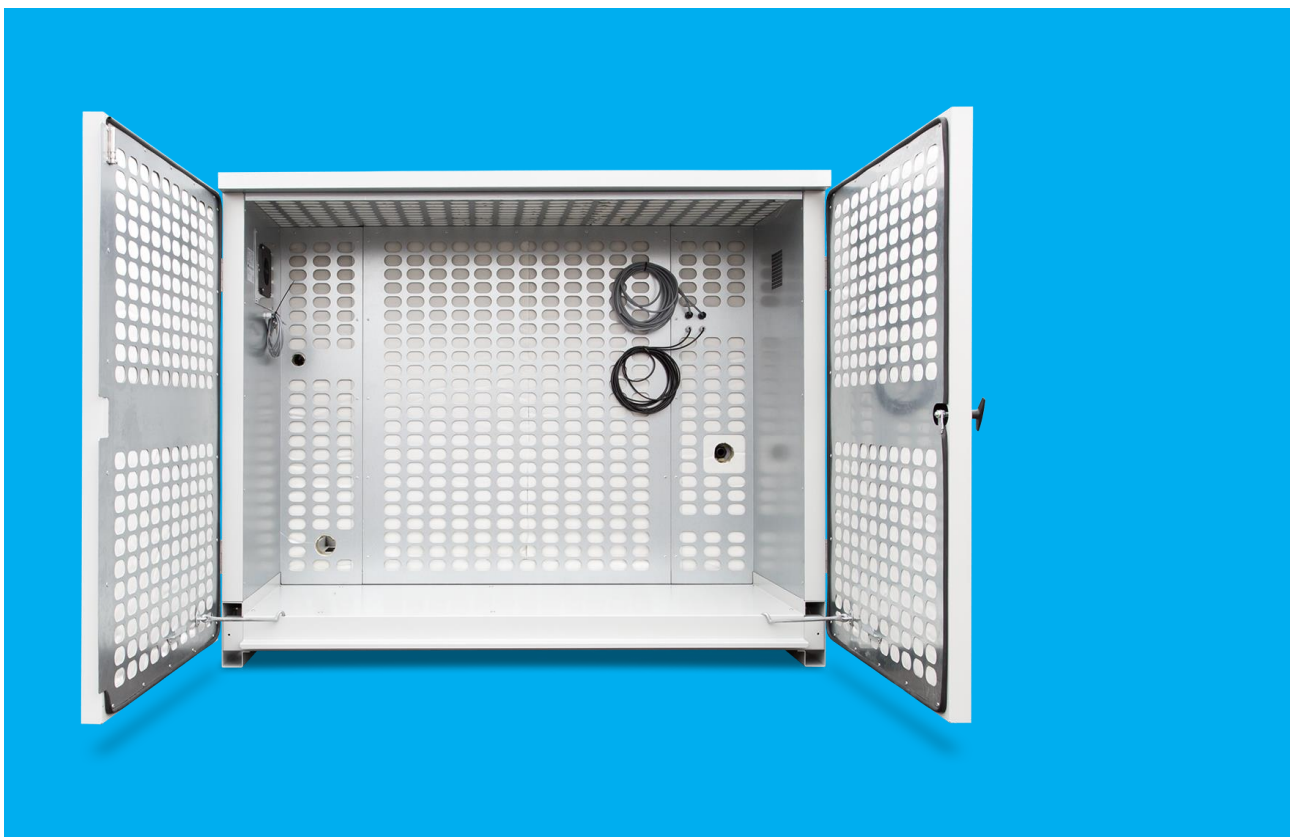
Key Features

- C&C housed condensers are fitted with a fully weather-proof acoustically lined compressor housing keeping noise break out to a minimum.
- The compressor housing is fitted with an extract fan which removes excessive heat build-up (via an acoustic duct to minimise secondary noise emissions).
- The compressor housing can be supplied with the option of a compressor mounting cradle to suit customer requirements.



BKB/BKFH Housed Condensers

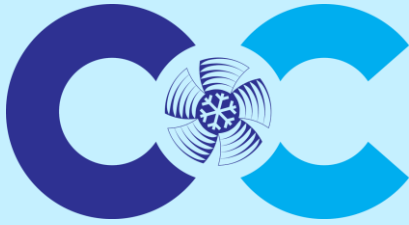
Nominal Capacity 21.5kW to 66.7kW



View of an acoustically lined compressor housing

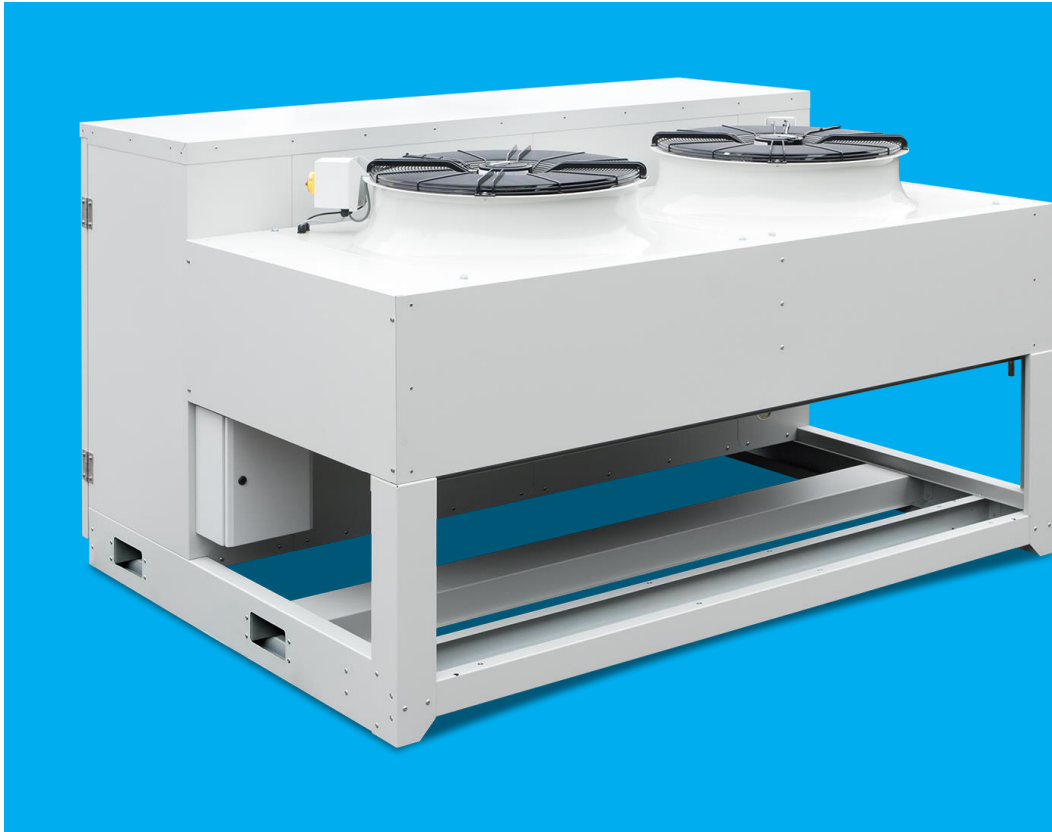
Fins and Fans

- The condenser coils are coated aluminium as standard and are also available with the option of copper fins.
- All fans are EC technology type which offer variable speed control for optimum energy efficiency, performance and noise levels.
- Axitop diffusers are fitted to certain models in the range (denoted by the suffix A on the part number) which further reduce the energy consumption and enhance unit performance.



BKB/BKFH Housed Condensers

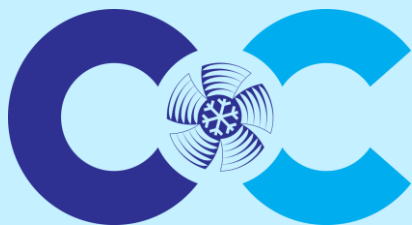
Nominal Capacity 21.5kW to 66.7kW



View of the condenser side of a unit

Isolator and Platework

- Condenser fans are fitted with mains isolator as standard wired back to a common junction box.
- All plate-work is constructed from heavy gauge galvanised steel with all external surfaces powder coated having excellent protection and an aesthetically pleasing appearance.



BKB/BKFH Housed Condensers

Nominal Capacity 21.5kW to 66.7kW

Unit Performance and Price List 2015

Condenser Only	Housed Unit	Nominal Capacity @ 32°C/8k Mid Point TD									2015 Nett Prices Ex-works Basingstoke Vinyl Coated Coils		2015 List Prices Ex-works Basingstoke Vinyl Coated Coils	
		Low Noise Level			Medium Noise Level			High Noise Level			Condenser Only	Housed Unit	Condenser Only	Housed Unit
		Fan Op. Speed	THR	dB(A) @10m	Fan Op. Speed	THR	dB(A) @10m	Fan Op. Speed	THR	dB(A) @10m				
KB-122CA-E63.H1	BKB-122CA-E63.H1	540	18.5	31	700	21.5	37	1000	25.7	45	£1,708.00	£2,820.00	£3,416.00	£5,640.00
KB-123CA-E63.H1	BKB-123CA-E63.H1	540	22.8	31	700	27.1	37	1000	33.6	45	£1,882.00	£2,994.00	£3,764.00	£5,988.00
KB-124CA-E63.H1	BKB-124CA-E63.H1	540	24.9	32	700	30.4	37	1000	38.9	45	£2,075.00	£3,187.00	£4,150.00	£6,374.00
KFHA1.2-122CA-EC80.L3	BKFHA1.2-122CA-EC80.L3	400	27.5	31	535	32.4	37	735	38.1	44	£2,340.00	£3,452.00	£4,680.00	£6,904.00
KFHA1.2-123CA-EC80.L3	BKFHA1.2-123CA-EC80.L3	390	32.9	31	535	40.8	38	735	49.4	45	£2,613.00	£3,725.00	£5,226.00	£7,450.00
KFHA1.2-124CA-EC80.L3	BKFHA1.2-124CA-EC80.L3	380	35	31	500	43.3	37	710	55.4	45	£2,899.00	£4,011.00	£5,798.00	£8,022.00
KFHA1.2-122CA-EC80.L3A	BKFHA1.2-122CA-EC80.L3A	450	30.4	31	625	36.2	37	735	39.1	41	£2,595.00	£3,707.00	£5,190.00	£7,414.00
KFHA1.2-123CA-EC80.L3A	BKFHA1.2-123CA-EC80.L3A	450	37.8	31	600	45.4	37	735	51.1	41	£2,867.00	£3,979.00	£5,734.00	£7,958.00
KFHA1.2-124CA-EC80.L3A	BKFHA1.2-124CA-EC80.L3A	435	40.8	31	590	50.9	37	735	58.9	41	£3,154.00	£4,266.00	£6,308.00	£8,532.00
KFHA1.2-122CA-EC80.H3	BKFHA1.2-122CA-EC80.H3	400	27.5	31	535	32.4	37	750	38.4	45	£2,559.00	£3,671.00	£5,118.00	£7,342.00
KFHA1.2-123CA-EC80.H3	BKFHA1.2-123CA-EC80.H3	390	32.9	31	525	40.3	38	735	49.4	45	£2,828.00	£3,940.00	£5,656.00	£7,880.00
KFHA1.2-124CA-EC80.H3	BKFHA1.2-124CA-EC80.H3	375	34.6	31	500	43.3	37	725	56.2	45	£3,137.00	£4,249.00	£6,274.00	£8,498.00
KFHA1.2-122CA-EC80.H3A	BKFHA1.2-122CA-EC80.H3A	450	30.4	31	625	36.2	37	925	43.4	45	£2,813.00	£3,925.00	£5,626.00	£7,850.00
KFHA1.2-123CA-EC80.H3A	BKFHA1.2-123CA-EC80.H3A	450	37.8	31	600	45.4	37	925	57.8	45	£3,082.00	£4,194.00	£6,164.00	£8,388.00
KFHA1.2-124CA-EC80.H3A	BKFHA1.2-124CA-EC80.H3A	435	40.8	31	585	50.6	37	900	66.7	45	£3,391.00	£4,503.00	£6,782.00	£9,006.00